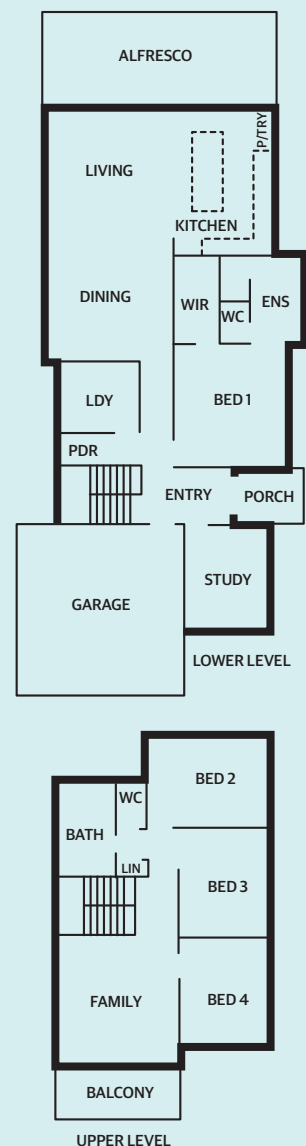


The Merlot

4 2

Address Contact builder
Price Deluxe version from \$467,000**Builder** Steadman Homes
Contact 0424 288 803, steadmanhomes.com.au
Versatile two-storey home with rear open-plan living zone, alfresco area, study, sitting area linked to front balcony, double garage

Maureen Eppen

The first show home by niche builder Steadman Homes aims to straddle the line between high-end custom-home design and project building, and will become one of the firm's standard floor plans.

The Merlot, in Melville, will be open at set times or by appointment for a limited period, to give potential homebuyers the chance to view the combination of quality and design flair offered by the builder, which is part of the award-winning Steadman Building Group.

Group managing director David Steadman said the idea behind the Merlot, and other Steadman Homes designs, was to harness popular elements of designs by Signature Custom Homes and make them the heroes of two-storey design.

"We are getting a lot of clients who recognise the quality and experience they can get from building with the right people," Mr Steadman said.

"These clients have come to us through Signature Custom Homes and are looking for a less expensive solution and a more simplified design experience.

"Steadman Homes is the kind of brand that will resonate with those looking for an exceptional build and an off-the-plan design."

The brand offered a series of designs and a standard specification, with designers then working one-on-one with clients to make any changes to personalise the plan to their family and budget.

"This is also the case with our specifications. Clients can start with our deluxe spec,



Steadman Homes' first show home is open in Melville.

but remove or add elements to finish it off to their style," he said.

"Lots of people are looking for that balance between a custom home and an off-the-plan home, and Steadman Homes seems to fill that gap — achieving the quality and perfection of a custom home and the boutique building process, but starting with a design rather than a blank piece of paper."

The four-bedroom, two-bathroom Merlot is a contemporary two-storey home to appeal to discerning buyers with a budget of less than \$500,000. The deluxe version of the home can be built from \$467,000.

A customised 1500mm-wide timber entry door opens to the foyer, with the staircase immediately ahead and a door on the left into the study, brightened by three corner windows.

On either side of the



staircase, there's a door from the garage, plus a powder room and the laundry.

Space below the staircase has been used for additional storage.

The main suite, on one side of a passage that leads to the main living zone, has a spacious, airy sleeping area with raised and recessed ceiling and a deep fitted robe and dressing room.

Beyond the passage, the dining area, living room and kitchen share a big, L-shaped

space linked through glass doors to a timber-lined alfresco area spanning the back of the home.

Upstairs is a versatile sitting area off the landing, which could be closed off to form a theatre room. It opens to a broad, timber-lined balcony at the front of the home.

Mr Steadman said the home suited a 12.5m-wide block, but could be customised to suit a range of block requirements.

OUT WITH
THE OLDWIN
A REROOF FROM
BRISTILE WORTH UP TO
\$30,000*Looking to reinvigorate your faded,
rusted, leaking roof or just want
a fresh new look?

Bristile Reroofing can help transform and add value to your roof. Get an obligation free estimate for your chance to win a reroof worth up to \$30,000*. Contact us today for your obligation free reroof estimate.



Phone 1300 274 784 or visit
www.bristilereroofing.com.au

BSA Number 726852. *Please go to www.bristilereroofing.com.au for full warranty and competition details.

